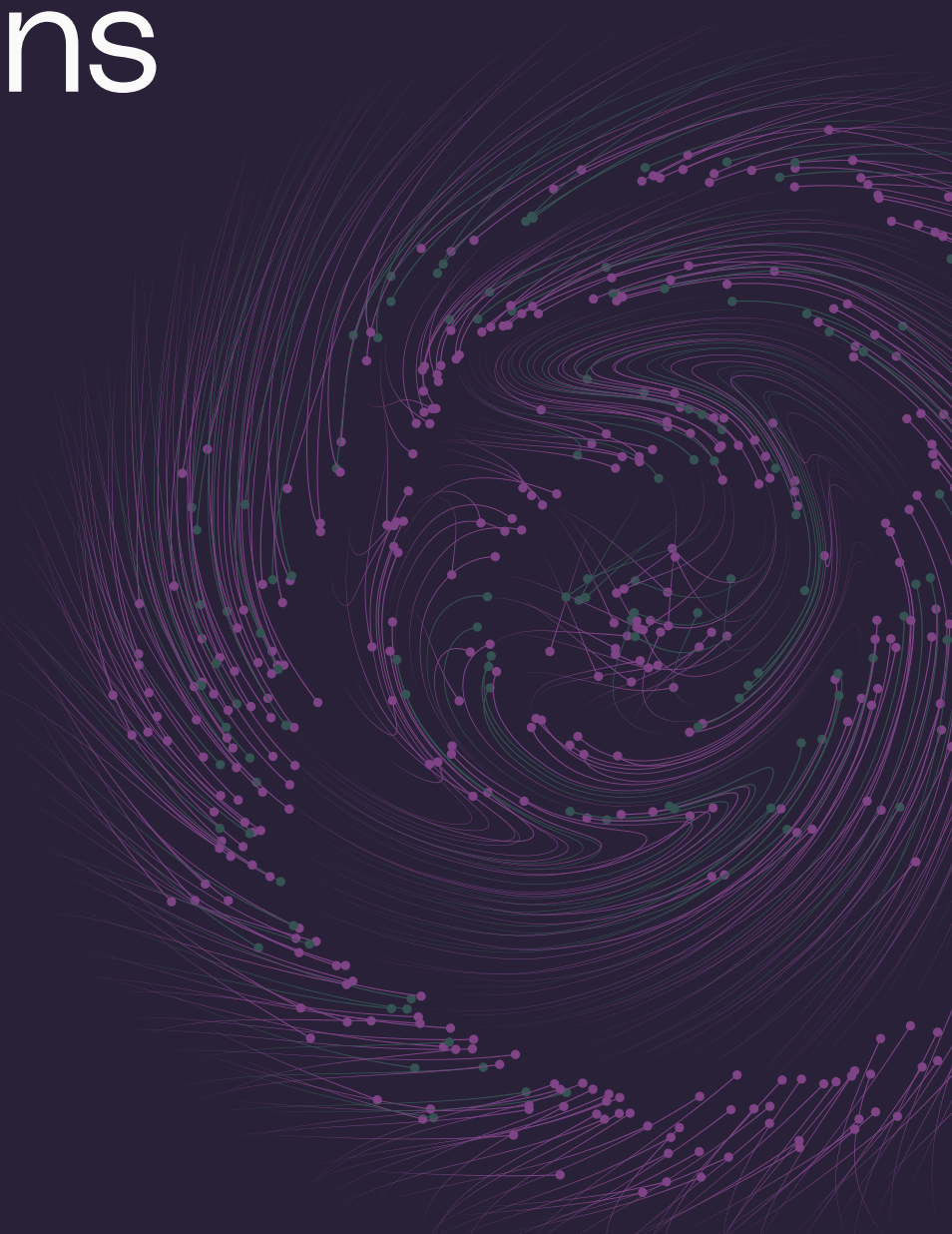


Onum Platform

Frequently Asked Questions

Feb, 2024



01 FAQs

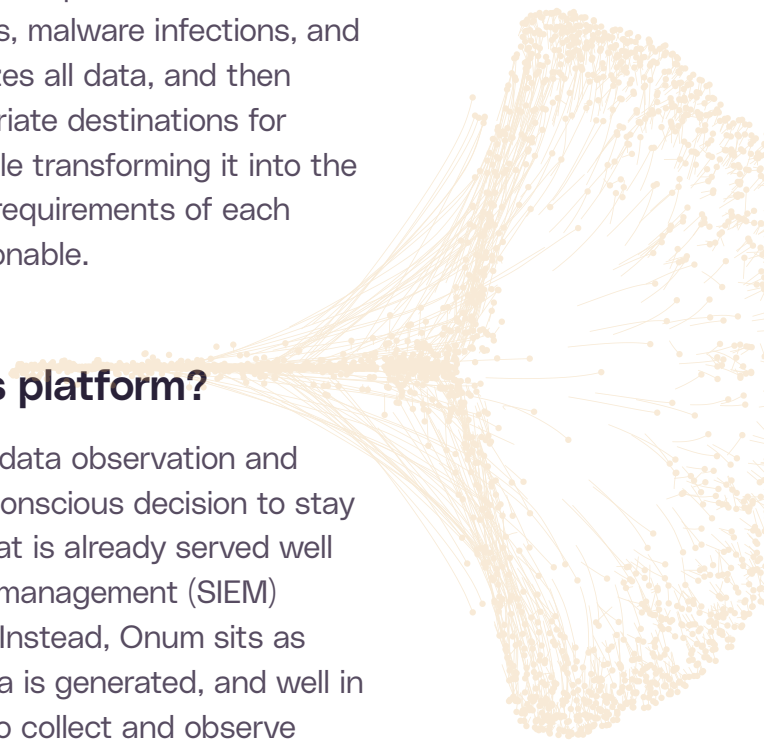
— What is the Onum Platform?

Onum is the industry's only truly agnostic data observability platform, enabling you to seamlessly integrate your existing IT stack to gain deep insights from any type of data, using any format, from any source. Onum helps you turn the noise of your vast amounts of data into something meaningful by empowering you with the context you require to make the most informed decisions.

The Onum Platform gathers all data as close as possible to where it's generated, and then observes it as it traverses the wire for real-time discoveries of any abnormalities — enabling you to take decisive action to prevent network downtime, payment system failures, malware infections, and more. It then observes and optimizes all data, and then routes it in real time to the appropriate destinations for specialized analysis or storage while transforming it into the appropriate formats to match the requirements of each receiving tool to make it more actionable.

— Is Onum a data analytics platform?

No. Unlike most tools that provide data observation and orchestration, Onum has made a conscious decision to stay out of the data analytics space that is already served well by security information and event management (SIEM) vendors and other analytics tools. Instead, Onum sits as close as possible to where the data is generated, and well in front of your analytics platforms, to collect and observe data across every aspect of your hybrid network. Onum works with these platforms in a truly agnostic fashion to ensure that the right data gets to the right place, in the right format — thereby enabling you to benefit from a best-of-breed solution. Other data orchestration vendors either have roots in, or are moving toward, the data analytics market. As a result, even if they say they're agnostic, it's simply not in their best interest to work perfectly seamlessly with a competitor.



01 FAQs

— Does Onum perform data reduction?

Yes. Like most other data observation and orchestration platforms, Onum enables you to easily move all or any portions of your data from anywhere to anywhere, while enriching, normalizing, and optimizing your data, so you'll always have full context to make the best decisions. Onum filters your data to reduce what you send. Data that is incomplete or duplicated (e.g., if you have hundreds or thousands of the same log, but you only need one of them, coupled with the frequency of occurrence) is removed, so that you only pay for what you need. In addition, the data can be transformed into any format to match the requirements of each receiving tool and to make it more actionable. And Onum preserves a full fidelity version of the original data, enabling you to maintain full control over your data, so that you can easily comply with regulatory auditors.

— What makes Onum stand out from other data observation and orchestration platforms?

Data observation and orchestration is just one piece of what the Onum Platform does. Existing data orchestration platforms fail to perform real-time observations, wasting precious time you need to take decisive action to prevent network downtime, payment system failures, malware infections, and more. Even a delay of a few minutes can translate to millions of dollars in expense to the business. In addition to fully satisfying the data orchestration use case, only Onum collects data as close as possible to where it's generated, and observes it as it traverses the wire to help you discern potential issues in real time.

Moreover, data reduction is only one of many use cases Onum serves. Instead, Onum takes a holistic view of the data in transit to deliver IT and Security leaders the deep insights they need to make rapid decisions and solve for a wide range of use cases.



01 FAQs

— **What integrations does Onum support?**

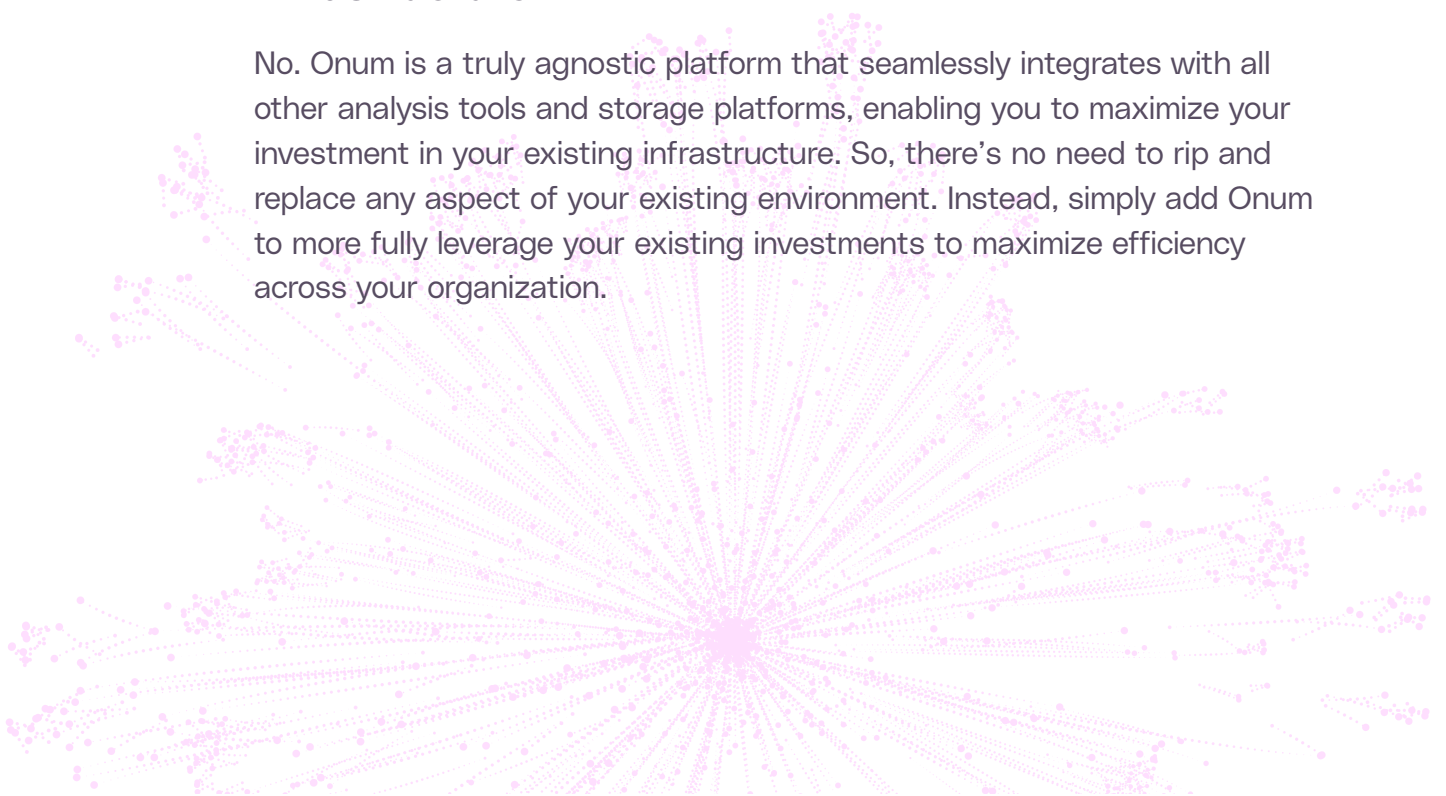
Onum unifies data across every aspect of the hybrid network — including physical on-premises assets; public and private clouds, including GCP, AWS, and Azure; and IoT devices. Onum also supports all major standards such as Netflow, Syslog, and Kafka to orchestrate data streams to any desired destination, including popular data analytics tools such as Splunk and Devo, as well as storage environments such as S3. In addition, Onum seamlessly integrates with any desired destination.

— **Does Onum work in hybrid on-premises and cloud**

Yes. Unlike other platforms which require disparate, disjointed versions of their product for cloud, virtual, and physical on-premises assets, thereby requiring you to manually stitch the data together, Onum efficiently collects data from anywhere it's generated, across every aspect of the hybrid network — including physical on-premises assets, those in multiple public and private clouds (e.g., GCP, AWS, Azure), and IoT devices at various locations and layers of the network — and seamlessly unifies all of that data so that it can be observed together in a single platform for immediate, actionable intelligence.

— **Will I need to replace any of my tools or existing infrastructure?**

No. Onum is a truly agnostic platform that seamlessly integrates with all other analysis tools and storage platforms, enabling you to maximize your investment in your existing infrastructure. So, there's no need to rip and replace any aspect of your existing environment. Instead, simply add Onum to more fully leverage your existing investments to maximize efficiency across your organization.



01 FAQs

— Will I need to add any infrastructure to support the Onum Platform?

No. The Onum Platform is SaaS-based, with most processing activities conducted in the Cloud. Client-side components can be deployed on a Linux machine, or on a Kubernetes cluster, for easy, flexible deployment in any environment while keeping them as close as possible to where the data is produced. This architecture delivers unparalleled speed and efficiency, enabling you to cut the infrastructure you have dedicated to orchestration by up to 80%.

— Will Onum add any latency to my network?

No. The Onum Platform was engineered for speed, efficiency, and scalability in modern hybrid environments. Onum's architecture eliminates the latency that plagues similar products, processing 5X the number of events per second as the closest competitor using the same hardware. In addition to this increased speed, Onum requires a mere fraction of the infrastructure to run, resulting in a total of 122 times greater efficiency — leading to significant CAPEX and OPEX savings.

— Can the Onum Platform scale as my needs grow?

Yes. The Onum Platform is highly scalable. Simply add listeners and managers to wherever you want to gather more data and they will interface with the Onum Cloud.

— How do I gain and maintain control of my data?

Analytics platforms weren't built to share data with other tools, leading to vendor lock-in and causing organizations to lose control over their data. Onum solves this problem by giving you the ability to easily move all or any portions of your data from anywhere to anywhere while maintaining a full fidelity version of the original data in storage. This enables you to retain full control over your data at all times and easily comply with regulatory monitors. Additionally, Onum tracks all movement for full traceability of where, when, and why every piece of data is sent.

01 FAQs

— Do I have to develop all data flows myself?

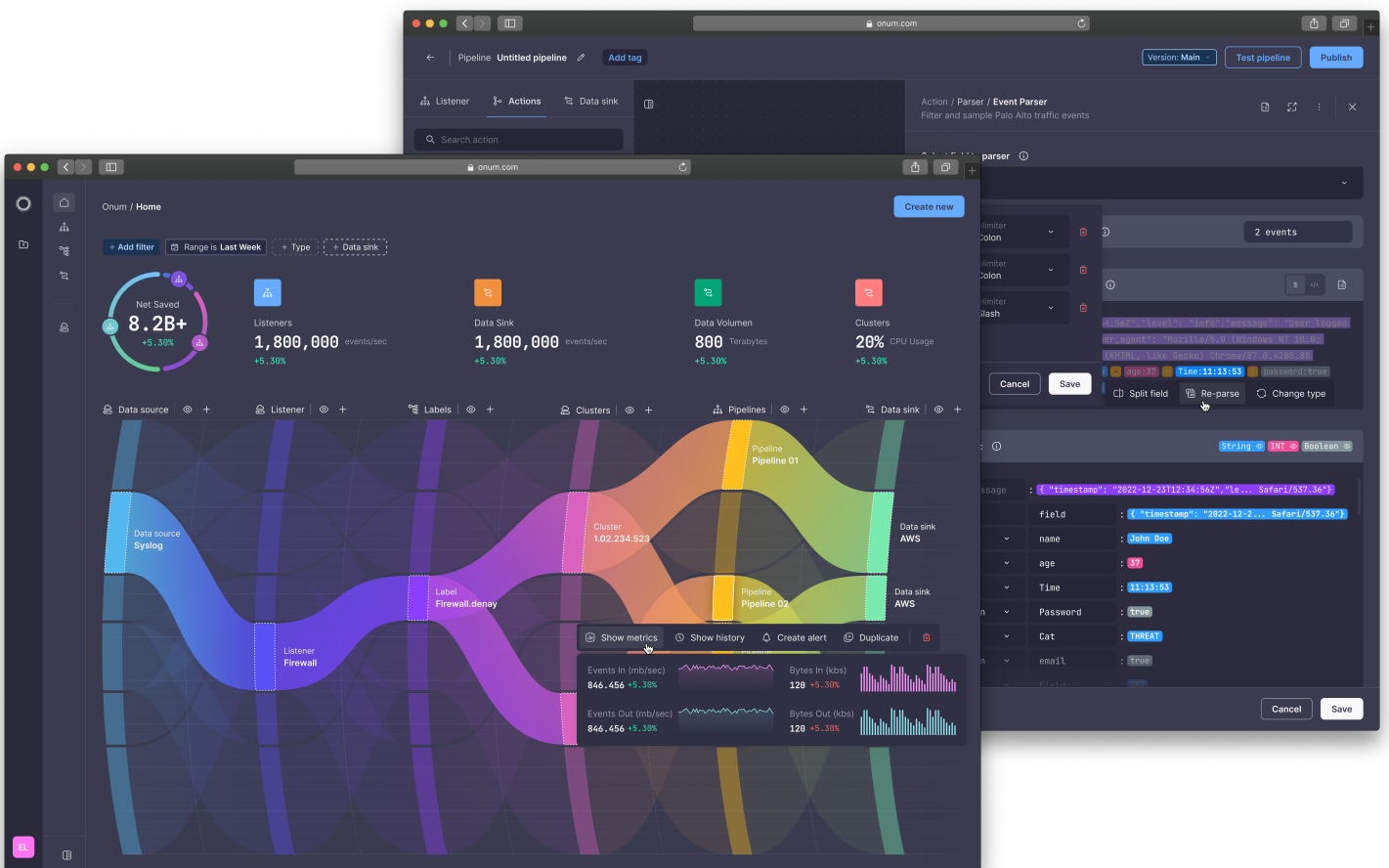
No. Onum understands that organizations lack the time and bandwidth to develop every data flow by hand. That's why we've developed the Onum Marketplace, which further extends the platform's out-of-the-box capabilities by providing access to shared data flows, community tools, and value-add modules that have been posted by Onum, as well as other Onum customers and partners. Most of these will be offered free of charge; for others, the owner may charge a nominal fee.

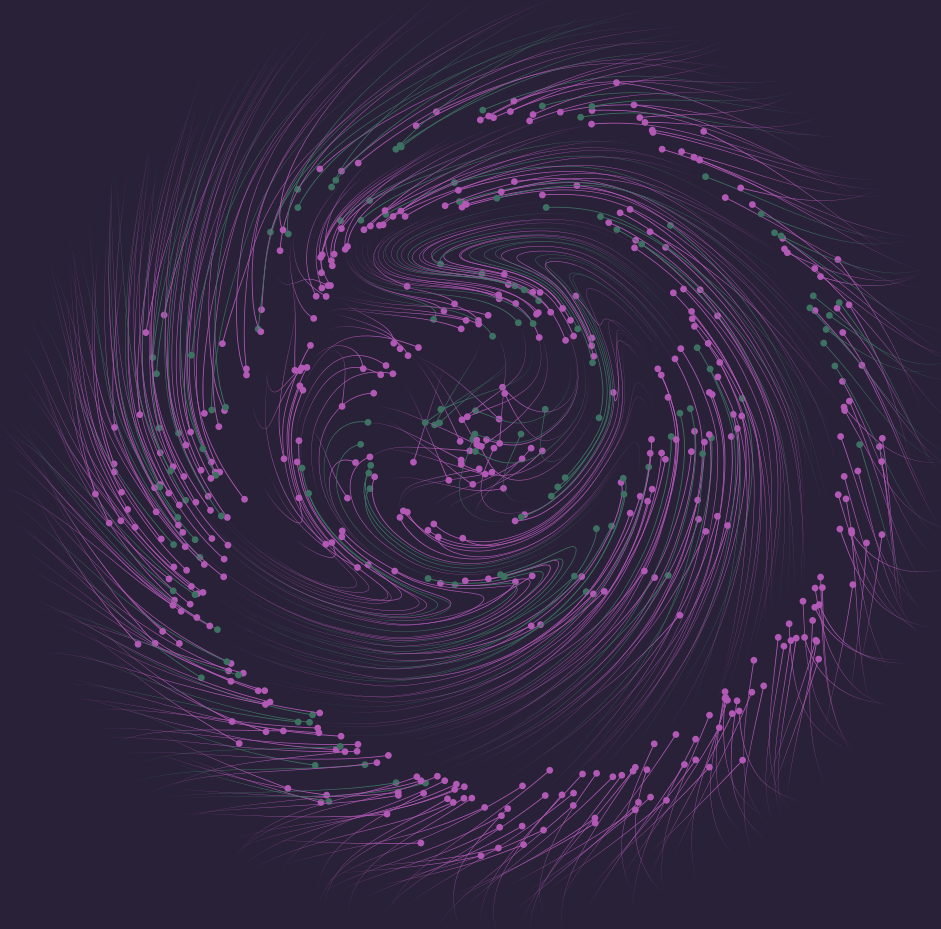
— How much coding will be required to deploy, configure, and manage Onum?

Absolutely none. Onum is built on a zero-code open platform, enabling you to easily configure listeners and data sinks, define and manage data pipelines, monitor performance, and view alerts using an intuitive graphical user interface.

— Does Onum provide technical support?

Yes. Onum provides 24x7 mission critical support via email and phone.





www.onum.com